

Kolme

KATALOG

Masa depan berkelanjutan dengan **energi terbarukan**



Ramah Lingkungan



Hemat Energi



Nyaman Sepanjang Tahun



Tahan Lama & Andal



ECO FRIENDLY

Menggunakan refrigeran yang ramah lingkungan



EFISIENSI TINGGI

Teknologi canggih untuk performa maksimal dan penghematan energi



SMART CONTROL

Kontrol pintar untuk kemudahan dan kenyamanan dari mana saja



KUALITAS TERJAMIN

Produk berkualitas tinggi dengan standar internasional dan garansi terpercaya



ENERGI HIJAU
UNTUK MASA DEPAN KITA SEMUA



www.kolme.com



kolmewaterheater@gmail.com

Kolmè

AIR TO WATER HEAT PUMP

Solusi Efisien untuk Pemanas Air di Hotel & Bangunan Komersial

Heat pump air to water yang dirancang untuk memberikan efisiensi tinggi, performa handal, dan solusi berkelanjutan bagi kebutuhan pemanas air di hotel, resort, dan gedung komersial.



ENERGY EFFICIENCY

Hemat energi, biaya lebih rendah



RELIABLE PERFORMANCE

Performa stabil untuk kebutuhan air panas sepanjang waktu



SUSTAINABLE SOLUTIONS

Ramah lingkungan untuk masa depan yang berkelanjutan



LOW NOISE OPERATION

Operasi senyap untuk kenyamanan maksimal



Model	PW030 -KFXRS	PW050 -KFXRS	PW070 -KFXRS	PW100 -KFXRS	PW150 -KFXRS	PW200 -KFXRS	PW250 -KFXRS	PW300 -KFXRS	PW400 -KFXRS	PW500 -KFXRS
Compressor brand	Gree	Copeland	Gree	Copeland						
Four-way valve brand	Sanhua									
Expansion valve brand	Sanhua									
Heating capacity (kW)	11	19	24.5	38.5	50	78	91	105	166	180
Input power (kW)	2.6	4.3	5.6	8.6	11.3	17.6	20.9	23.8	36.5	40.2
COP	4.23	4.42	4.38	4.48	4.42	4.43	4.35	4.41	4.55	4.48
Rated current (A)	11.9	7.7	10.00	15.4	20.2	31.5	37.4	42.5	65.2	71.9
Max input power (kW)	4.2	6.8	8.5	14	18.3	28	33.5	36.2	55	59
Max current (A)	19.2	12.2	15.2	25	32.7	50.1	60	65.2	98.3	105.5
Rated outlet water temperature (°C)	55	55	55	55	55	55	55	55	55	55
Highest outlet water temperature (°C)	60	60	60	60	60	60	60	60	60	60
Power supply	220V/50Hz					380V/3N~/50Hz				
Anti-electric shock rate	I	I	I	I	I	I	I	I	I	I
IP Grade (Level of protection)	IPX4	IPX4	IPX4	IPX4	IPX4	IPX4	IPX4	IPX4	IPX4	IPX4
Refrigerant	R410A									
Operation Ambient temp (°C)	-7~43°C									
Production capacity (L/H)	221	387	501	795	1010	1673	1892	2193	3547	3698
Diameter of pipe (mm)	DN20	DN25	DN25	DN40	DN40	DN50	DN65	DN65	DN65	DN65
water circulation (m ³ /H)	1.9	3.3	4.2	6.6	8.6	13.4	15.7	18.1	28.6	31
Water pressure drop (kPa)	55	70	70	75	90	80	80	70	70	70
Noise (dB(A))	55	58	59	62	63	67	72	73	78	78
Net weight(kg)	91	122	133	195	256	385	470	485	1300	1300
Body size(W*D*H)	810x695x865	750x805x1165		1500x750x1165	1530x790x1100	1705x1005x1200	2005x1005x1400		2400x1300x2350	
Loading quantity (20GP/40GP/40HQ)	18/78/78	14/28/56	6/14/28	6/14/28	6/14/28	6/12/12	5/10/10		/	/
Condenser type	High efficiency tank heat exchanger						Casing heat exchanger			
Operating water temperature (°C)	9 - 60°C									
Test condition: Inlet water temperature 15°C, Outlet water temperature 55°C, Dry bulb temperature 20°C, Wet bulb temperature 15°C.										



HEMAT ENERGI

Mengurangi konsumsi energi dan biaya operasional



PERFORMA HANDAL

Kinerja stabil dan efisien sepanjang waktu



RAMAH LINGKUNGAN

Menggunakan refrigerant ramah lingkungan untuk masa depan



OPERASI SENYAP

Desain low-noise untuk kenyamanan maksimal

MINI RESIDENTIAL

HEATPUMP

Efficient Comfort, Every Season

Heatpump mini untuk rumah modern yang hemat energi, nyaman, dan ramah lingkungan. Memberikan air panas secara efisien sepanjang tahun.



ENERGY
EFFICIENCY



YEAR-ROUND
COMFORT



QUIET
OPERATION



ECO
FRIENDLY



HIGH EFFICIENCY

COP hingga 4.50 untuk efisiensi maksimal



WIDE OPERATING RANGE

Bekerja optimal pada suhu -7°C ~ 43°C



BUILT TO LAST

Perlindungan IPX4 dan refrigeran ramah lingkungan R410A



QUIET & RELIABLE

Operasi senyap dengan tingkat kebisingan ≤52 dB(A)



Residential Air source water heater (monobloc, with built-in circulation pump)

BOM codo	CP-RW0100017	CP-RW0150028	CP-RW0200031	CP-RW0300123
Product model	PW010-KFXRS/1MT	PW015-KFXRG/1MT	PW020-KFXRS/1MT	PW030-KFXRS/1MT
Heating capacity (kW)	3.5	5	7	9.8
Input power (kW)	0.86	1.21	1.63	2.30
COP (Coefficient of Performance)	4.06	4.12	4.30	4.26
Rated current (A)	3.95	5.55	7.45	10.53
Max input power (kW)	1.30	1.68	2.24	3.4
Max current (A)	5.95	7.69	10.25	15.56
Rated outlet water temperature (°C)	55	55	55	55
Highest outlet water temperature (°C)	60	60	60	60
Power supply	230V/50Hz			
Anti-electric shock Rate	I	I	I	I
IP Grade (Level of protection)	IPX4	IPX4	IPX4	IPX4
Refrigerant	R410A			
Operation Ambient Temp. (°C)	-7 ~ 43			
Production capacity (L/H)	75	107	150	211
Diameter of pipe (mm)	DN20	DN20	DN20	DN25
water circulation (m ³ /H)	0.60	0.86	1.20	1.69
Water pressure drop (kPa)	20	24	28	35
Koise (dB(A))	≤50	≤50	≤52	≤54
Net weight/Gross weight(kg)	48/56	52/60	60/70	75/86
Body size(W*D*H)	956×350×550	956×350×550	1006×350×600	1100×420×650
Packing size(W*D*H)	1010×370×680	1010×370×680	1055×370×730	1150×430×780
Compressor Brand	GMCC			
Four-way valve Brand	Sanhua			
Expansion valve Brand	Sanhua			
Water pump built in	SHIMGE			
Condenser type	High efficiency tube in shell heat exchanger			
Operating water temperature (°C)	9 ~ 60°C			

Tost condition: Inlot water temperature 15°C, Outlet water temperature 55°C, Dry bulb temperature 20°C, Wet bulb temperature 15°C.

Note: the parameters of some products are changed in the process of continuous optimization, Please refer to the actual products.



ENERGY
EFFICIENCY



YEAR-ROUND
COMFORT



QUIET
OPERATION



ECO
FRIENDLY

SMART COMFORT
FOR MODERN LIVING

Kolmè

R290

R290 All in One Heat Pump

High Efficiency • Eco Friendly • All in One Solution

Solusi pemanas air hemat energi, ramah lingkungan dan terintegrasi untuk kenyamanan maksimal di hunian premium Anda.



ECO FRIENDLY
R290 refrigerant with low GWP



HIGH EFFICIENCY
COP up to 4.28 for energy saving



SAFE & RELIABLE
Multiple protection for long-lasting use



ALL IN ONE
Easy installation, space saving



ALL IN ONE HEAT PUMP - TOP BLOWING

Model	PW005-KZJRS(B)/100L	PW005-KZJRS(B)/200L	PW005-KZJRS(B)/300L
Water Tank Volume (L)	100L	200L	300L
Power Supply	220-240V~, 50Hz	220-240V~, 50Hz	220-240V~, 50Hz
Heating Capacity (kW)	0.95	1.8	1.8
Rated Power (W)	245	426	421
Rated Current (A)	1.13	1.95	1.92
COP	3.88	4.23	4.28
Electric Heater Rated Power (W)	1500	1500	1500
Electric Heater Rated Current (A)	7.1	7.1	7.1
Max Input Power (W)	1860	2200	2200
Max Input Current (A)	8.5	10.6	10.6
Max Water Pressure (MPa)	0.8	0.8	0.8
Max Exchanger Working Pressure (MPa)	3.2	3.2	3.2
Air Flow (m³/h)	350	450	450
Static Pressure (Pa)	130	150	150
Compressor Brand	HIGHLY	HIGHLY	HIGHLY
Inside Body Material of Tank	(SS2205/duplex Inner Tank)	(SS2205/duplex Inner Tank)	(SS2205/duplex Inner Tank)
Refrigerant	R290	R290	R290
Working Temperature Range (°C)	-5~43	-5~43	-5~43
Noise (dB)	43	46	46
Water Pipes Connector Size	DN16	DN20	DN20
IP Grade (Level of Protection)	IPX1	IPX1	IPX1
Net Weight (KG)	47	82	90
Gross Weight (KG)	59	88	98
Net Dimension (mm)	Ø510×1218	Ø560×1765	Ø640×1860
Package Dimension (mm)	580×580×1315	630×630×1945	720×720×2040
Loading Quantity (carton)	40/160	27/57	24/48

Testing Condition: Water Temperature from 15 °C to 55 °C, Dry bulb temperature 20 °C, Wet bulb temperature 15°C.



NATURAL & EFFICIENT
R290 refrigerant, low GWP, high performance and energy saving.



QUIET OPERATION
Low noise design for comfortable living.



WIDE WORKING RANGE
Working temperature range from -5°C to 43°C.



DURABLE & SAFE
High quality tank with multiple safety protection.

IDEAL FOR



Villa



Luxury Home



Resort



Private Residence



MAX WATER TEMPERATURE
55°C



MAX WORKING PRESSURE
0.8 MPa



IP GRADE
IPX1



WATER PIPES CONNECTOR SIZE
DN16 / DN20



Swimming Pool Heat Pump

Efficient | Quiet | Reliable

- ✔ Kinerja tinggi dengan efisiensi energi unggul
- ✔ Operasi senyap dan stabil
- ✔ Desain kokoh untuk penggunaan jangka panjang
- ✔ Kontrol pintar untuk kenyamanan maksimal



Ramah Lingkungan



Low Noise Operation



Wide Operating Temperature



R32 DC Inverter Ultra Series	PW050-KFXYC	PW100-KFXYC	PW150-KFXYC	PW200-KFXYC	PW250-KFXYC	PW300-KFXYC
Model	40~85	80~170	120~250	150~300	210~400	260~500
Advised pool volume (m ³) ^①	-7~43°C					
Operating air temperature (°C)						
Performance Condition: Air 27°C, Water 26°C, Humidity 80%						
Heating capacity (kW)	26	51.5	75	100	121	145
Heating capacity (Btu)	88400	175100	255000	340000	411400	493000
Consumed power (kW)	4.2	8.4	12.1	16.8	20.2	23.8
COP	6.2	6.1	6.2	6	6	6.1
Performance Condition: Air 15°C, Water 26°C, Humidity 70%						
Heating capacity (kW)	18.3	39.8	53.5	77.5	90.3	105.8
Heating capacity (Btu)	62220	135320	181900	263500	307020	359720
Consumed power (kW)	3.9	8.4	11.3	16.7	19.2	22.8
COP	4.7	4.7	4.7	4.6	4.7	4.6
Performance Condition: Air 35°C, Water 28°C, Humidity 80%						
Cooling capacity (kW)	15.3	31.0	43.0	62.5	73.0	85.5
Sound pressure at 1m dB(A)	56	58	60	62	64	66
Sound pressure at 10m dB(A)	44	46	48	50	52	54
Heat exchanger	Spiral titanium tube in PVC shell					
Casing	Metal Casing					
Refrigerant	R410A					
Power supply	380V~400V/3PH/50Hz					
Compressor	Gree			Copeland		
Water connection (mm)	G1-1/2" (PVC female thread)	G2" (PVC female thread)	G2" (PVC female thread)	Dn90 (PVC flange)	Dn90 (PVC flange)	Dn90 (PVC flange)
Rated input current at air 15°C (A)	6.05	13.02	17.52	25.89	29.77	35.35
Advised water flux (m ³ /h)	11.2	22.1	32.3	43.0	52.0	62.4
Water pressure drop (max) KPa	50	50	50	45	45	50
Net weight / Gross weight (kg)	135/145	200/220	248/268	352/372	450/480	465/500
Product size (mm)	750x805x1165	1500x750x1075	1530x790x1100	1705x1065x1200	1705x1065x1200	2005x1065x1400
Loading quantity (20GP/40GP/40HQ)	14/28/56	6/14/28	6/14/28	6/12/12	6/12/12	5/10/10
Operating water temperature(°C) Heating	9~40°C					
Operating water temperature(°C) Cooling	9~35°C					

① The advised pool volumes are valid under ideal conditions: Air 27°C, Water 26°C, Humidity 80%, Pool covered with an isothermal cover.

Note: The data above is for reference only, please refer to the nameplate on the unit if for more specific data.

Kolmè

R32 FULL-INVERTER POOL HEAT PUMP

SMART TECHNOLOGY, PERFECT COMFORT

Kolmè menghadirkan teknologi DC Inverter yang ramah lingkungan untuk efisiensi maksimal, performa stabil, dan pengalaman berenang yang nyaman sepanjang tahun.

- HEMAT ENERGI hingga 70%
- SUPER SENYAP
- PEMANASAN CEPAT & STABIL
- TANGGUH & TAHAN LAMA

DC INVERTER

Performa Optimal & Hemat Energi

R32

Ramah Lingkungan Refrigerant R32

WIFI READY

Smart Control (WiFi Ready)

PROTEKSI LENGKAP

Untuk Keamanan Maksimal

SPESIFIKASI TEKNIS

Model	PW010-KZXYC-H	PW020-KZXYC-H	PW030-KZXYC-H	PW050-KZXYC-H	PW080-KZXYC-H
Operating air temperature (°C)	-7~43				
Performance Condition: Air 27°C, Water 26°C, Humidity 80%					
Heating capacity (kW)	7.50~19.2	11.00~25.0	14.00~31.5	20.00~40.0	32.5~55.5
Heating Capacity(Btu)	25500~65228	37400~85000	47600~107100	68000~136000	110900~221000
Consumed power (kW)	1.15~0.13	1.83~0.17	2.15~0.21	3.33~0.27	5.42~0.43
COP	6.5~14.8	6.0~14.7	6.5~15.0	6.0~14.8	6.0~15.0
COP at 50% capacity	10.50	11.00	10.50	11.00	11.00
Performance Condition: Air 15°C, Water 26°C, Humidity 70%					
Heating capacity (kW)	5.80~14.2	8.5~16.5	10.7~24.0	15.6~28.5	25.4~50.7
Heating Capacity(Btu)	19720~4828	28900~5610	36380~8160	53040~9690	86665~17300
Consumed power (kW)	1.15~0.20	1.77~0.23	2.12~0.34	3.25~0.40	5.29~0.72
COP	5.0~7.1	4.8~7.2	5.0~7.1	4.8~7.0	4.8~7.0
COP at 50% capacity	6.50	6.50	6.50	6.50	6.50
Performance Condition: Air 35°C, Water 28°C, Humidity 80%					
Cooling capacity (kW)	4.00	6.00	7.20	10.10	15.60
Consumed power (kW)	1.14	1.75	2.07	2.97	4.43
EER	3.50	3.42	3.48	3.40	3.52
Sound pressure at 1m dB(A)	38~48	40~50	42~51	43~53	45~57
Sound pressure at 50%capacity at 1m dB(A)	40	41	43	44	49
Sound pressure at 10m dB(A)	18~25	19~26	22~27	24~31	26~35
Heat exchanger	Spiral titanium tube in PVC				
Casing	ABS plastic casing black color				
Power supply	230V/1 Ph/50Hz			380V/3 Ph/50 Hz	
Water Connection (mm)	ø50				
Rated input current at air 15°C (A)	5.1~0.9	7.8~1.0	9.3~1.5	14.3~1.8	24.2~3.3
Max. power input (kW)	1.5	2.35	2.9	3.65	6.0
Max. current (A)	6.9	10.8	13.3	16.7	27.5
Advised water flux (m³/h)	2~4	3~5	4~6	8~10	12~16
Water Pressure Drop (max) kPa	5	8	10	15	25
Net weight/ Gross weight(kg)	56/68	58/70	64/76	72/86	93/108
Body size (mm)	1000 x 396 x 640			1125 x 416 x 765	1156 x 433 x 905
Package size (mm) (carton)	1060 x 400 x 780			1180 x 420 x 905	1230 x 440 x 1045
Package size (mm) (Plywood)	1090 x 430 x 790			1210 x 430 x 915	1260 x 470 x 1055
Loading quantity (20GP/40HQ)	84/174			48/96	42/90
Refrigerant	R32/350g	R32/450g	R32/550g	R32/800g	R32/2100g
Compressor				Panasonic	
Four-way valve				Sanhua	
Expansion valve				Sanhua	
Frequency drive board				CHOO	
Operating water temperature (°C) *heating				9~40	
Operating water temperature (°C) *cooling				9~35	

R32

**REFRIGERANT
RAMAH LINGKUNGAN**

Efisiensi tinggi dengan dampak lingkungan yang lebih rendah.



WIFI READY

Kendalikan kapan saja, di mana saja.



HEMAT ENERGI
Lebih Efisien



SUPER SENYAP
Operasi Hening



PEMANASAN CEPAT & Stabil



PROTEKSI LENGKAP
Aman & Tahan Lama



SMART CONTROL
WiFi Ready

Kolme

GEOTHERMAL

WATER TO WATER HEAT PUMP

Solusi Efisien untuk Pemanas Air, Pendingin Air, dan Sistem Energi Bangunan Komersial

KOLME Water to Water Heat Pump memanfaatkan energi panas dari sumber air (ground water, sungai, danau, atau sumber air lainnya) untuk menghasilkan air panas maupun air dingin dengan efisiensi tinggi, performa stabil, dan biaya operasional yang rendah.



COP HINGGA 5.4



HEMAT ENERGI

Hemat energi hingga 75% dibandingkan pemanas listrik konvensional.



PERFORMA HANDAL

Komponen berkualitas tinggi dari merek terpercaya dunia.



RAMAH LINGKUNGAN

Mengurangi emisi karbon dan mendukung energi terbarukan.



OPERASI SENYAP

Desain low-noise untuk kenyamanan operasional sepanjang waktu.

MENGAPA MEMILIH KOLME?



EFISIENSI TINGGI

Dengan COP hingga 5.4, setiap 1 kW energi input menghasilkan hingga 5.4 kW energi panas.



KOMPONEN BERKELAS DUNIA

- CAREL Controller
- CAREL Expansion Valve
- Copeland / Panasonic Compressor
- SWEP Plate Heat Exchanger
- Wilo Water Pump
- Komponen listrik berstandar internasional



KAPASITAS LENGKAP

Tersedia berbagai kapasitas mulai dari 24 kW hingga 210 kW untuk memenuhi kebutuhan berbagai aplikasi.



APLIKASI LUAS

- Hotel & Resort
- Rumah Sakit
- Apartemen
- Industri
- Swimming Pool

SPESIFIKASI TEKNIS

Model		FWW/HCD150C	FWW/HCD250C	FWW/HCD350C	FWW/HCD400C	FWW/HCD500C	FWW/HCD600C	FWW/HCD100C
Power supply	V/PH/Hz	380/3/50	380/3/50	380/3/50	380/3/50	380/3/50	380/3/50	380/3/50
Heating - water source side: inlet 15°C / 7°C, Using side: water from 15°C to 55°C								
Heating capacity ①	kW	60	105	120	160	210	24	42
	BTU/h	204709	358241	426500	614160	716481.8182	81884	143296
COP ①		4.35	4.23	4.29	4.44	4.30	4.62	4.57
Input power (Heating) ①	kW	13.8	24.82	28	36	48.8372093	5.2	9.2
Input current (Heating) ①	A	26.21	47.14	53.18	68.37	92.75	9.88	17.47
Heating - water source side: inlet / outlet: 10°C / -, Using side: water from 15°C to 55°C								
Heating capacity ①	kW	45.0	72.5	87.0	116.0	145.0	17.4	29.0
	BTU/h	153500	247400	296800	395800	494700	59400	98900
COP ①		4.1	4.1	4.1	4.1	4.1	4.1	4.1
Input power (Heating) ①	kW	10.98	17.68	21.22	28.29	35.37	4.24	7.07
Input current (Heating) ①	A	20.8	33.6	40.3	53.7	67.2	8.1	13.4
Heating - water source side: inlet / outlet: 10°C / -, Using side: water inlet: 30°C, water outlet: 35°C								
Heating capacity ①	kW	50.0	80.0	96.0	128.0	168.0	19.2	32.0
	BTU/h	170600	273000	327600	436700	573200	65500	109200
COP ①		5.4	5.4	5.4	5.4	5.4	5.4	5.4
Input power (Heating) ①	kW	9.26	14.81	17.78	23.70	31.11	3.56	5.93
Input current (Heating) ①	A	17.6	28.1	33.8	45.0	59.1	6.8	11.3
Heating - water source side: inlet / outlet: 10°C / -, Using side: water inlet: 40°C, water outlet: 45°C								
Heating capacity ①	kW	46.7	75.0	90.0	120.0	150.0	18.0	30.0
	BTU/h	159300	255900	307100	409400	511800	61400	102400
COP ①		4.05	4.05	4.05	4.05	4.05	4.05	4.05
Input power (Heating) ①	kW	11.53	18.52	22.22	29.63	37.04	4.44	7.41
Input current (Heating) ①	A	21.9	35.2	42.2	56.3	70.3	8.4	14.1
Cooling - water source side: inlet 20°C / 30°C -, Using side: water inlet: 12°C, water outlet: 7°C								
Cooling capacity	kW	45.0	75.0	120.0	160.0	150.0	18.0	30.0
	BTU/h	153532	255886	426500	614160	511772.7	61413	102355
Input power (Cooling)	kW	10.80	17.9	30.00	36.00	35.8	4.20	7.10
Input current (Cooling)	A	20.5	33.9	57.0	68.4	67.9	8.0	13.5
Throttling device		EEV	EEV	EEV	EEV	EEV	EEV	EEV
Controller		LCD	LCD	LCD	LCD	LCD	LCD	LCD
Compressor		Scroll	Scroll	Scroll	Scroll	Scroll	Scroll	Scroll
Max running current	A	31.5	50.7	60.8	81.0	101.3	12.2	20.3
Noise	dB(A)	55	56	57	62	62	51	53
Water inlet/outlet	inch	1-1/2"	3"	3"	4"	4"	1"	1-1/4"
Water flow volume	m³/h	7.7~12.0	13.8~21.5	16.5~25.7	22.0~34.4	28.9~43.0	3.3~5.2	5.5~8.6
Refrigerant		R410A	R410A	R410A	R410A	R410A	R410A	R410A

Test condition: Inlet water temperature 15°C, Outlet water temperature 55°C, Dry bulb temperature 20°C, Wet bulb temperature 15°C.

① Data berdasarkan kondisi: inlet 15°C (water source side).

Kolmè

HIGH TEMPERATURE HEAT PUMP

HOT WATER SOLUTION
UP TO 80°C

Efficient • Reliable • Sustainable



HIGH TEMPERATURE
Hot water up to 80°C
for industrial applications



ENERGY EFFICIENT
High COP up to 2.57
for low running cost



RELIABLE & DURABLE
Industrial grade components
for long service life



ECO FRIENDLY
R134A refrigerant for
lower environmental impact

WIDE APPLICATION



HOTEL



HOSPITAL



INDUSTRY



DAIRY & FOOD



SAFE & PROTECTED
IPX4 Protection
Built for outdoor installation

**HIGH TEMPERATURE.
HIGH PERFORMANCE.**

DESIGNED FOR INDUSTRIAL DEMAND



Up to 80°C
Hot Water



High COP
Up to 2.57



Energy Saving
& Low Carbon

TECHNICAL SPECIFICATIONS

Model	PF030 -KFGRS-S	PF030 -KFGRS	PF050 -KFGRS	PF100 -KFGRS	PF150 -KFGRS	PF200 -KFGRS	PF250 -KFGRS	PF300 -KFGRS
Compressor Brand	Copeland(EVI)							
Four-way valve Brand	Sanhua							
Expansion valve Brand	Sanhua							
Heating capacity (kW)	7.4	8.3	13.8	27.6	41.1	55.1	65.3	82.6
Input power (kW)	2.9	3.3	5.4	10.8	16	21.5	25.4	32.3
COP	2.55	2.52	2.56	2.56	2.57	2.56	2.57	2.56
Rated current (A)	13.2	6.6	10.8	21.6	32.2	43	51	64.6
Max input power (kW)	3.92	4.46	7.3	14.6	21.6	29.0	34.3	43.6
Max current (A)	17.8	8.9	14.6	29.2	43.5	58.1	69.0	87.2
Rated outlet water temperature(°C)	75	75	75	75	75	75	75	75
Highest outlet water temperature(°C)	80	80	80	80	80	85	85	85
Power supply	220V/50Hz				380V/50Hz			
Anti-electric shock Rate	I	I	I	I	I	I	I	I
IP Grade (Level of protection)	IPX4	IPX4	IPX4	IPX4	IPX4	IPX4	IPX4	IPX4
Refrigerant	R134A							
Operation Ambient Temp(°C)	-5~43°C							
Production capacity (L/H)	106	119	198	396	790	987	987	1184
Diameter of pipes (mm)	Dn25	Dn25	Dn25	Dn32	Dn50	Dn65	Dn65	Dn65
water circulation (m³/H)	3	3	5	10	15	20	25	30
Water pressure drop (kPa)	25	25	30	35	38	46	48	52
Noise (dB(A))	≤55	≤55	≤58	≤66	≤68	≤68	≤70	≤75
Net weight/Gross weight(kg)	105/111	105/111	150/160	310/330	372/412	482/532	582/642	612/675
Body size(W*D*H)	1110x490x1260	1110x490x1260	1110x490x1410	1500x800x1600	1560x1000x1950	1850x1100x1950	2000x1100x2080	2300x1100x2300
Loading quantity (20GP/40GP/40HQ)	28/56/56	28/56/56	12/24/52	6/12/12	6/12/12	4/10/10	4/10/10	0/0/5
Condenser type	High efficiency tank heat exchanger				Casing heat exchanger			
Operating water temperature(°C)	9 ~ 80°C							

Test condition: Inlet water temperature 15°C, Outlet water temperature 75°C,
Dry bulb temperature 20°C, Wet bulb temperature 15°C.



High Efficiency
Lower Operating Cost



Advanced Technology
Stable Performance



Easy Installation
Low Maintenance

Kolmè

WATER TANK SOLUTIONS

Kolmè menghadirkan solusi tangki air berkualitas tinggi untuk kebutuhan air panas dan penyangga air Anda.



DATA TEKNIS BUFFER TANK KOLMÈ (SS304 STAINLESS STEEL)

KAPASITAS (LITER)	60L	80L	100L	150L	200L	250L	300L	500L
Diameter tangki (Ø)	Ø410mm	Ø470mm	Ø470mm	Ø570mm	Ø570mm	Ø670mm	Ø670mm	Ø700mm
Diameter tutup manhole	Ø120mm	Ø120mm	Ø120mm	Ø120mm	Ø120mm	Ø160mm	Ø160mm	Ø200mm
Tinggi (H)	648mm	865mm	1015mm	1235mm	1550mm	1555mm	1835mm	2023mm
Material tangki dalam	SS304	SS304	SS304	SS304	SS304	SS304	SS304	SS304
Ketebalan tangki dalam	1.0mm	1.0mm	1.0mm	1.2mm	1.2mm	1.5mm	1.5mm	1.5mm
Material tangki luar	Galvanized steel with painting	Galvanized steel with painting	Galvanized steel with painting	Galvanized steel with painting	Galvanized steel with painting	Galvanized steel with painting	Galvanized steel with painting	Galvanized steel with painting
Elemen pemanas listrik	G1" F	G1" F	G1" F	G1" F	G1" F	G1" F	G1" F	G1" F
Inlet / Outlet air	R ¾"	R ¾"	R ¾"	R ¾"	R ¾"	R ¾"	R ¾"	R ¾"
Thermostat	Automatic reset control (high precision)	Automatic reset control (high precision)	Automatic reset control (high precision)	Automatic reset control (high precision)	Automatic reset control (high precision)	Automatic reset control (high precision)	Automatic reset control (high precision)	Automatic reset control (high precision)
Temp. sensor port	G1/2" F (±2pcs)	G1/2" F (±2pcs)	G1/2" F (±2pcs)	G1/2" F (±2pcs)	G1/2" F (±2pcs)	G1/2" F (±2pcs)	G1/2" F (±2pcs)	G1/2" F (±2pcs)
Anode magnesium	/	/	/	/	/	/	/	/
Cold water inlet	G1/2" M	G1/2" M	G1/2" M	G1/2" M	G1/2" M	G1/2" M	G1/2" M	G3/4" M
Exhaust	G1/2" F	G1/2" F	G1/2" F	G1/2" F	G1/2" F	G1/2" F	G1/2" F	G3/4" F
Water drain	G1/2" F	G1/2" F	G1/2" F	G1/2" F	G1/2" F	G1/2" F	G1/2" F	G3/4" F
Circulating inlet	G1" F	G1" F	G1" F	G1" F	G1" F	G1" F	G1" F	G1" F
Circulating outlet	G1" F	G1" F	G1" F	G1" F	G1" F	G1" F	G1" F	G1" F
(Condensing) inlet	G1" F	G1" F	G1" F	G1" F	G1" F	G1" F	G1" F	G1" F
(Condensing) outlet	G1" F	G1" F	G1" F	G1" F	G1" F	G1" F	G1" F	G1" F
Working pressure	6bar	6bar	6bar	6bar	6bar	6bar	6bar	6bar
Testing pressure	10bar	10bar	10bar	10bar	10bar	10bar	10bar	10bar
Insulation	Polyurethane	Polyurethane	Polyurethane	Polyurethane	Polyurethane	Polyurethane	Polyurethane	Polyurethane
Insulation thickness	50mm	50mm	50mm	50mm	50mm	45mm	45mm	50mm
Packing size (Ø x H)	547×547×770mm	547×547×943mm	547×547×1103mm	647×647×1340mm	647×647×1660mm	747×747×1600mm	747×747×1910mm	747×747×2150mm

i Catatan:

Spesifikasi dapat berubah sewaktu-waktu tanpa pemberitahuan terlebih dahulu.



Kualitas Terjamin



Standar Internasional



Dukungan Teknis



Ramah Lingkungan

PROJECT REFERENCE

KOLME HEAT PUMP INSTALLATION

Kolme Heat Pump telah diaplikasikan pada berbagai proyek untuk menyediakan kebutuhan air panas secara efisien, stabil dan ramah lingkungan.



Hemat Energi
hingga 75%



Air Panas
24 Jam



Operasi
Otomatis



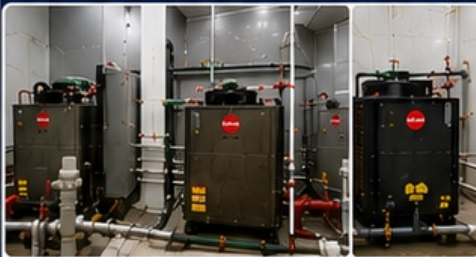
Aman &
Handal



Ramah
Lingkungan



COMMERCIAL HOT WATER SYSTEM



- ✓ Sistem pemanas air untuk hotel, apartemen, rumah sakit, pabrik dan gedung komersial
- ✓ Suplai air panas terpusat
- ✓ Kapasitas besar & stabil
- ✓ Operasi hemat energi

SWIMMING POOL HEAT PUMP SYSTEM



- ✓ Menjaga suhu air kolam tetap hangat dan nyaman
- ✓ Hemat listrik & ramah lingkungan
- ✓ Kontrol otomatis
- ✓ Operasi senyap

DOMESTIC HOT WATER HEATER



- ✓ Air panas 24 jam
- ✓ Hemat listrik
- ✓ Instalasi ringkas
- ✓ Perawatan mudah

PROJECT PORTFOLIO

1 Rooftop Hot Water Installation



Instalasi di area rooftop dengan storage tank kapasitas besar untuk kebutuhan air panas 24 jam.

2 Hotel Hot Water System



Sistem pemanas air terpusat untuk hotel dengan efisiensi tinggi.

3 Residential Heat Pump Water Heater



Solusi pemanas air untuk rumah tinggal dengan desain compact dan hemat energi.

4 Swimming Pool Heating System



Menjaga suhu kolam renang tetap nyaman sepanjang tahun berenang yang operasional rendah.

5 Centralized Hot Water System



Sistem terpusat untuk suplai air panas dengan kapasitas besar dan stabil.

6 Storage Tank System



Storage tank stainless steel berkualitas tinggi untuk penyimpanan air panas skala besar.

9 Dual Heat Pump Installation



Instalasi dual unit untuk kebutuhan air panas dengan performa tinggi dan efisien.

WHY CHOOSE KOLME HEAT PUMP?

- Hemat Energi
- Performa Tinggi
- Biaya Operasional Rendah
- Perawatan Mudah
- Umur Pakai Panjang
- Ramah Lingkungan

OUR SERVICES

- System Design
- Product Supply
- Installation
- Commissioning
- Maintenance Service
- Technical Support